



MARUBISHI GLOBAL

idea+design+eat
ideat
marubishi

Product & Development Wholesale & Distribution Systems
Shop Planning & Machinery Service Training & Convention

Company Profile
2020

OUR PHILOSOPHY

企業使命感

The disciples of prosperity, connecting the food industry.

食品産業のパイプ役繁栄の使徒、丸菱。

Lead with sincerity

誠実を持って一貫しましょう

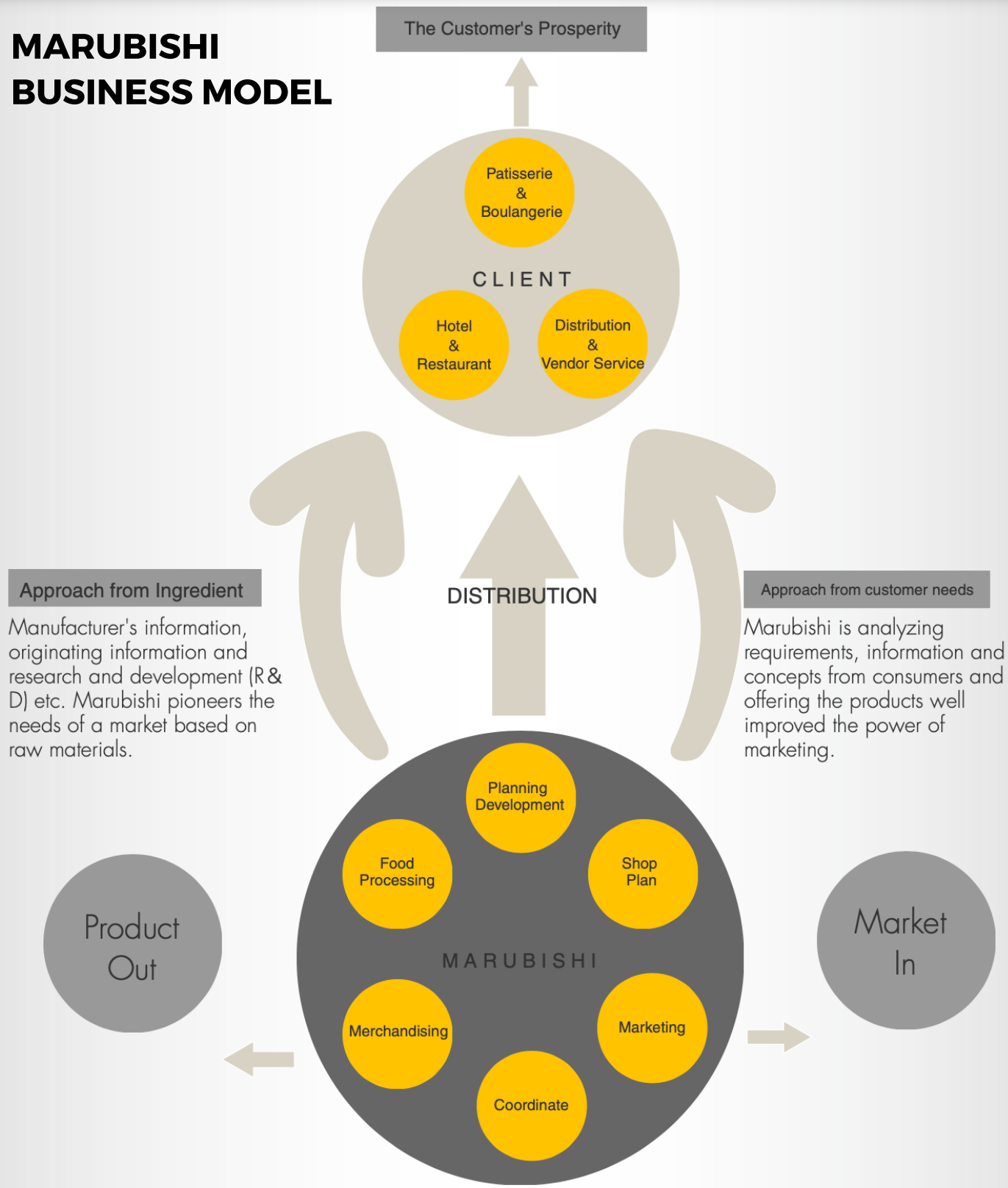
Honor towards our customers and products

お客様と商品に感謝しましょう

Thrive together with aspiration

常に希望を持って努力続けましょう

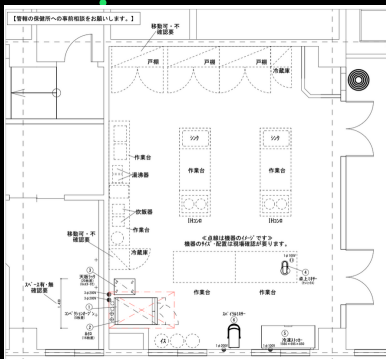
MARUBISHI BUSINESS MODEL



MARUBISHI BUSINESS



Marubishi is a general trading company of **raw materials, tools, machinery,** packaging which fundamentally focuses on the confectionery and baking industry. Before one can launch a store and begin operations, one must set up various things, including **store design,** machinery, raw materials, lineup of products as well as sales methods in order to actually begin selling. MARUBISHI International provides total support for baking and confectionery industry with **expertise** in all phases, in cooperation with the Japanese head office. We are aiming for **HALAL** raw materials or more of all that we offer currently without having to compromise with the superior quality of Japanese raw materials, machinery and packages. Marubishi Private Brand products invented from Japanese high-quality and high-technology are introduced as new products that were not on the market until now, and we support it to make easier and more delicious products.



EVER-GROWING

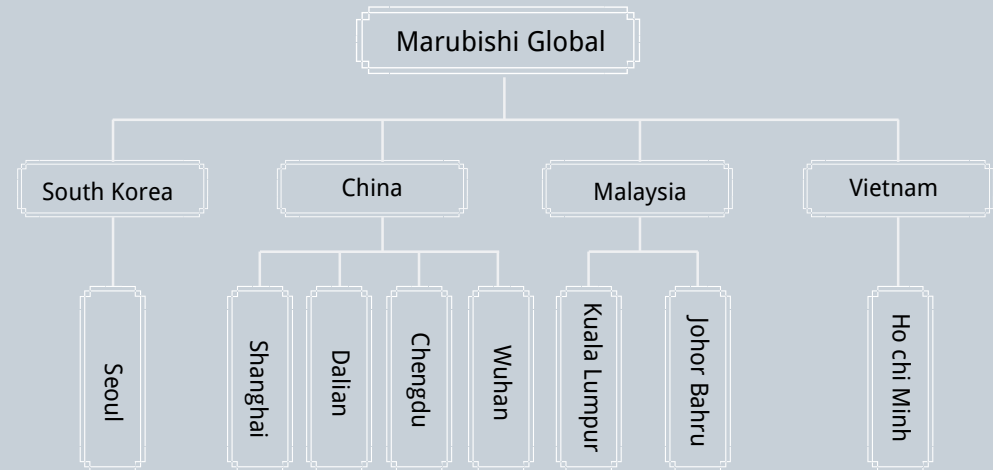
With a branch opening every 6 months, Marubishi has been experiencing rapid growth over the past few years. As per our stakeholders point of view and beliefs, the growth will grow continuously. With plans of developing in the European market starting this year, Marubishi hopes to dominate the B2B F&B market both through market share and brand value. Marubishi aims to achieve the No.1 spot as experts in the baking and confectionery industry through East and South-east Asia and you can be a part of this growth as well by investing smartly in any of our new offerings. With investors comprise from all walks of the business world, including angel investors, venture capitalists or trusted jobbers who have chosen to grow with us as we take over this industry.

marubishi **Korea** //
Co.,Ltd.
Ingredients & Machines

marubishi **Shanghai** //
Co.,Ltd.
Ingredients & Equipments

marubishi **Malaysia** //
Ingredients & Equipments (M)
Sdn. Bhd.

marubishi **Vietnam** //
Co.,Ltd.
Consulting



Branches

China

Shanghai head office
Dalian branch
Chengdu branch
Wuhan Branch

Japan

Kumamoto Head Office
Tokyo branch
Fukuoka branch
Hiroshima Sales Office
Kitakyushu Sales Office
Kurume Sales Office
Yamaguchi Sales Office
Saga Sales Office
Oita Sales Office
Nagasaki Sales Office
Miyazaki Sales Office
Kagoshima Sales Office

Malaysia

Kuala Lumpur Main Store
Johor Bahru Branch

South Korea

Seoul head office

Vietnam

Ho Chi Minh Head office



Staff



Honda Masahiro
CEO



Chiyoda Hiroshi
Global General Manager



Fujimoto Takahiro
Malaysia · Vietnam Business
Manager
(Japanese, English)



Li Kun
China Business Manager
(Japanese, Chinese)



JunHyung Park
South Korea Business
Manager
(Japanese, English,
Korean)



Song Tao
New Business Executive
Manager
(Japanese, English,
Chinese)



Liu Libo
Project Asisstant
(Japanese, Chinese)



Kamaki Yusuke
Accountant
(Japanese)



Nogami Mari
Designer
(Japanese, Chinese,
Taiwanese)



Kunwar Kamal
Human Resource
Coordinator
(Japanese, English,
Hindi, Nepali)



Ta ThiVan
Vietnam Business
Assistant
(Japanese,
Vietnamese)



Yan Yonghu
Dailian manager
(Japanese, Chinese)



Xiong Xiaoying
Chengdu manager
(Japanese, Chinese)



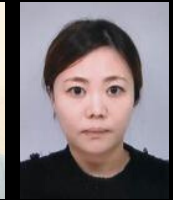
Li Lianxiao
Wuhan manager
(Japanese, Chinese)



Park Ho Young
Korean sales manager
(Japanese, English,
Korean)



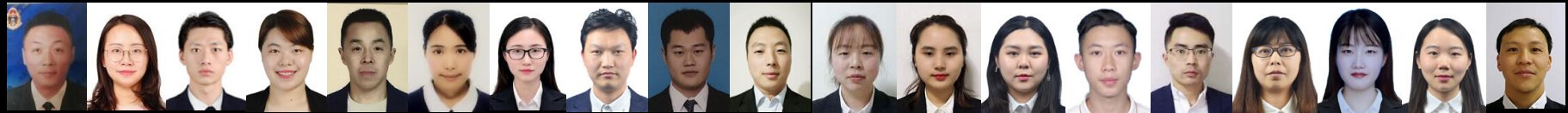
Cindy Teng
KL sales manager
(Japanese, English,
Chinese)



Kim Jihee
Korean sales manager
(Japanese, English,
Korean)



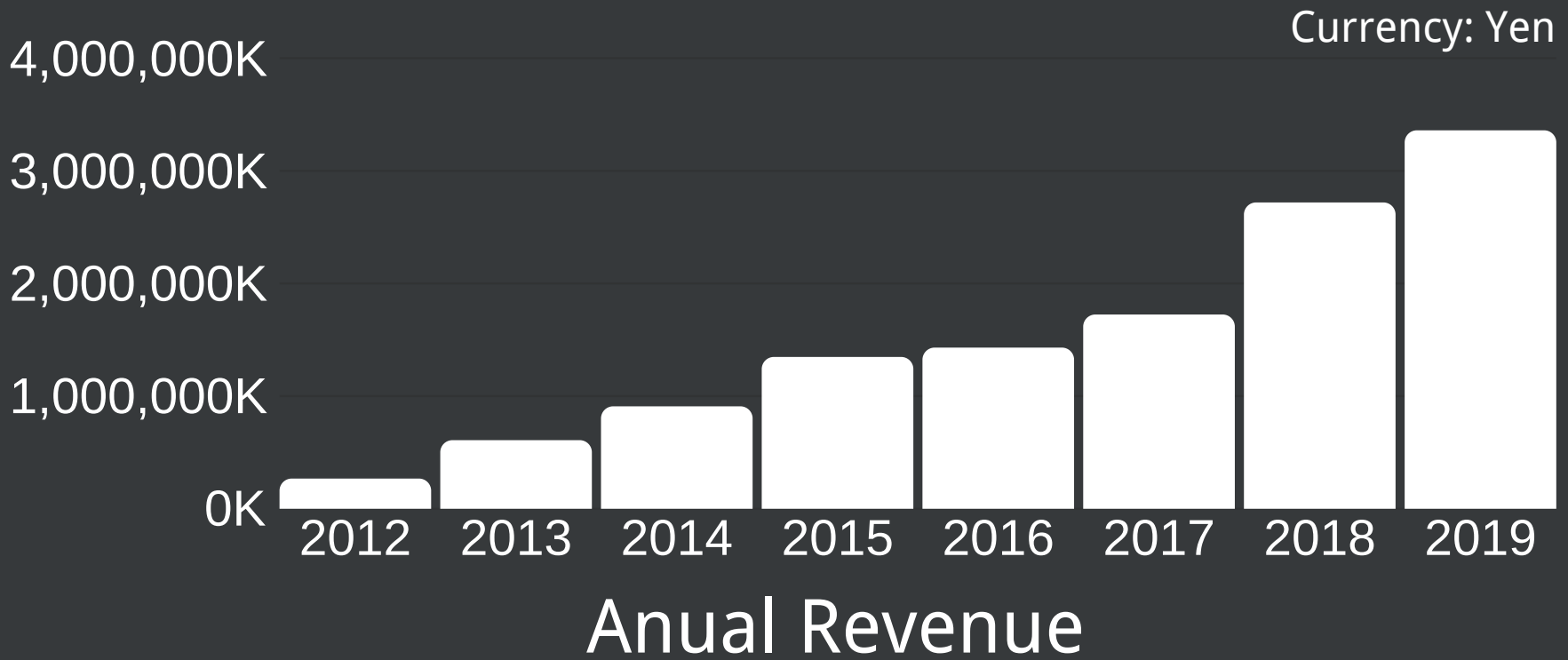
China



Malaysia



South
Korea



Scan For Further Information

Homepage:



Malaysia



China



South Korea

Catalog:



Malaysia



China(Equipment)



China(Material)